

# UROLIFT 2 ATC™

Advanced Tissue Control



## DELIVERING CONFIDENCE. IMPLANTING OUTCOMES.

### Designed for all prostate types

Innovating on the #1 chosen minimally invasive treatment for BPH<sup>1</sup>, the UroLift 2 ATC™ System is designed to make it easier for urologists to treat more patients with the UroLift System, with confidence.

Bringing together the benefits of the proven UroLift 2 System platform + enhanced tissue control for increased confidence

#### 1 STREAMLINE

The physician experience on a unified UroLift 2 Delivery System

#### 2 ENHANCED CONTROL

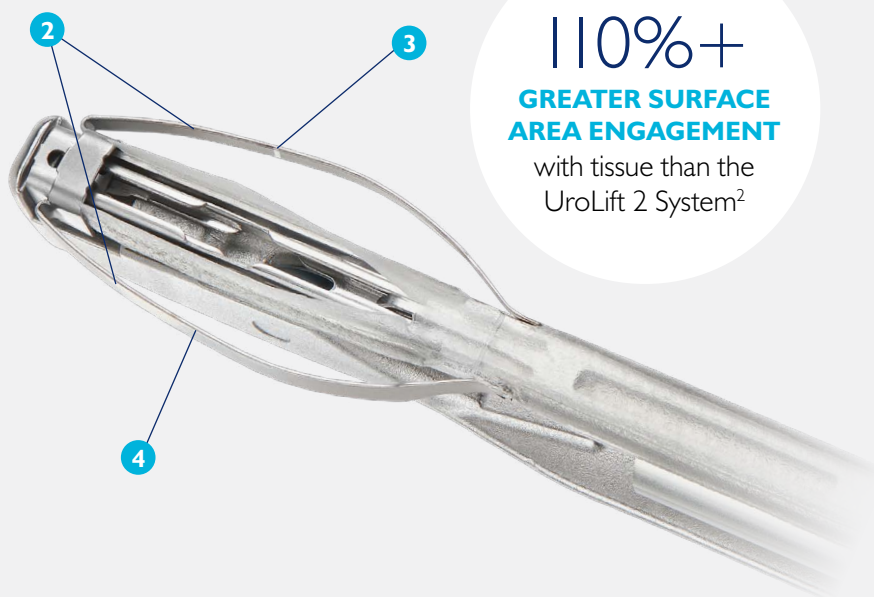
Tissue control wings on the UroLift 2 ATC System with its unique shape helps hold tissue during manipulation and minimizes view obstruction

#### 3 IMPROVED TARGETING ACCURACY

Laser-etched needle location markers help with targeting and delivery of implants

#### 4 ATRAUMATIC DESIGN

Rounded edges and flexible material designed to help reduce tissue trauma



110%+  
GREATER SURFACE  
AREA ENGAGEMENT  
with tissue than the  
UroLift 2 System<sup>2</sup>

## WHEN TISSUE IS THE ISSUE, TAKE ADVANTAGE OF UROLIFT 2 ATC™ SYSTEM

UroLift 2 ATC System is designed to treat all prostate types, including obstructive median lobes, lateral lobes, and more.

OVER  
**450K**

BPH patients have been treated with the UroLift System<sup>1</sup>

**93%**

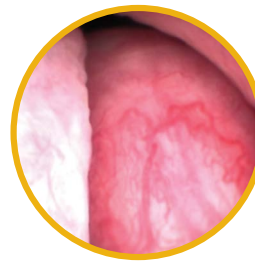
of patients with an obstructive median lobe recommend the UroLift System at 3 months post-treatment<sup>3</sup>

OVER  
**145**

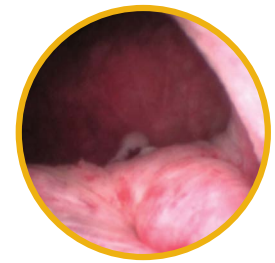
peer-reviewed and 22 sponsored publications<sup>4</sup>

**UROLIFT SYSTEM OUTCOMES** in the real world are largely consistent with those from the randomized controlled studies<sup>5</sup>

### OBSTRUCTIVE MEDIAN LOBE

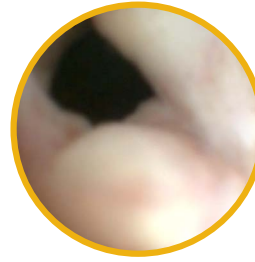


BEFORE

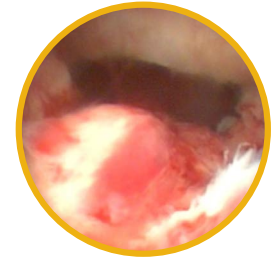


AFTER

### POST-TURP REGROWTH



BEFORE

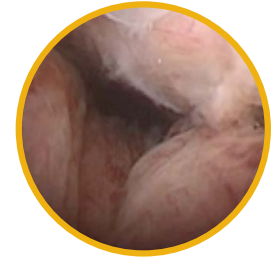


AFTER

### LATERAL LOBE



BEFORE



AFTER

Indicated for the treatment of symptoms of an enlarged prostate up to 100cc in men 45 years or older. As with any medical procedure, individual results may vary. Most common side effects are temporary and include hematuria, dysuria, micturition urgency, pelvic pain, and urge incontinence.<sup>1</sup> Rare side effects, including bleeding and infection, may lead to a serious outcome and may require intervention. Consult the Instructions for Use (IFU) for more information.

Caution: Federal (USA) law restricts this device to sale by or on the order of a physician.

1. Internal Sales Ops Data: Definitive Health; 2. Internal Engineering Data: Engineering Analysis; 3. Ruktalis Prostate Cancer Prostatic Dis 2018; 4. Internal Data: Clinical Studies;

5. Eure, J Endourol 2019;

\*No instances of new, sustained erectile or ejaculatory dysfunction in the L.I.F.T. pivotal study

Teleflex, the Teleflex logo, UroLift, UroLift ATC, and the UroLift logo are trademarks or registered trademarks of Teleflex Incorporated or its affiliates, in the U.S. and/or other countries. All other trademarks are the property of their respective owners.

© 2023 Teleflex Incorporated. All rights reserved. MAC02746-01 Rev A